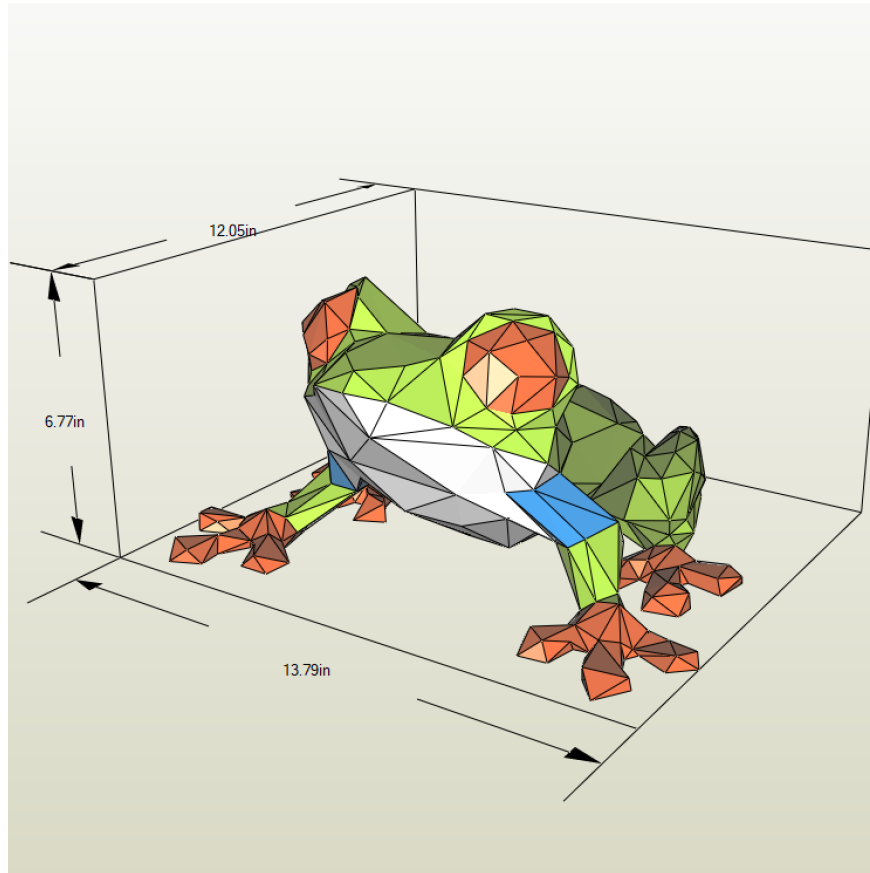





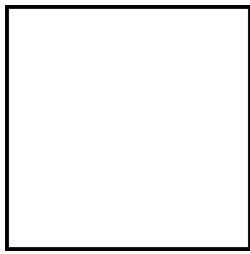
Red-Eyed Tree Frog

350 x 306 x 172 mm




- Difficulty level: ★★★★★ (4/5) Experienced level. This model contains lots of pieces which requires previous experience, a bit of love, and patience
- Assembling time: 8 - 12 hours
- Parts: 84

Suggested Colors:

			
Green	Orange	Blue	White
Page 1-4	Page 5-6	Page 7	Page 8-9

 <https://www.etsy.com/shop/paperproject3d>

 @paperproject3d

 paperproject3d@gmail.com

Red-Eyed Tree Frog

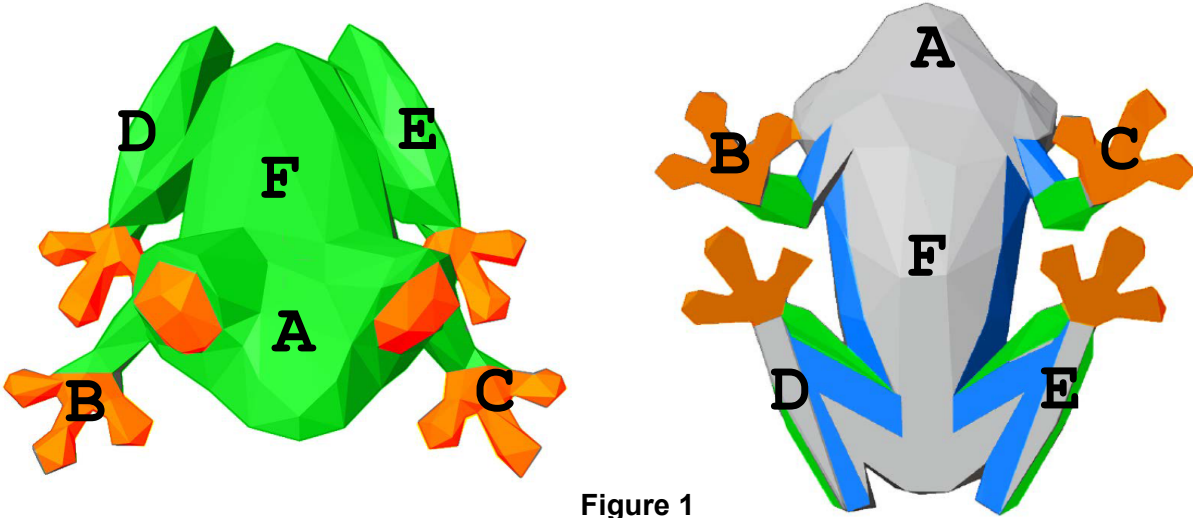
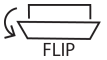


Figure 1

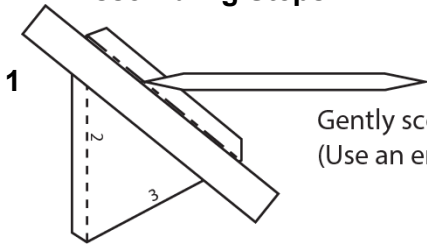
How to build this model:

1. Start with pieces that have "A". For easy assembly, continue in an alphanumerical order
2. The lines will eventually be on the inside of the model
3. "Figure 1" shows which section each letter represents
4. Table on the right shows the number of pieces of sections in each page

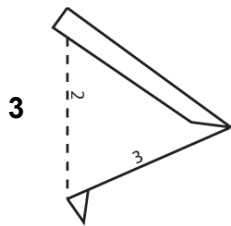
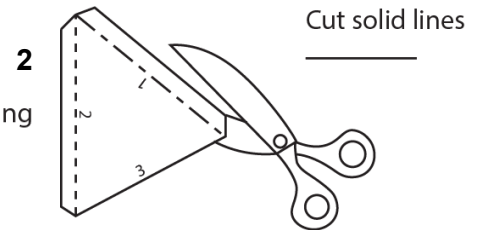
Section	Page								
	1	2	3	4	5	6	7	8	9
A	13				2			3	
B		3			7		1		
C		4			4		1		
D		10				6	1		1
E			10			6	1		1
F				1	3			2	3



Assembling Steps:

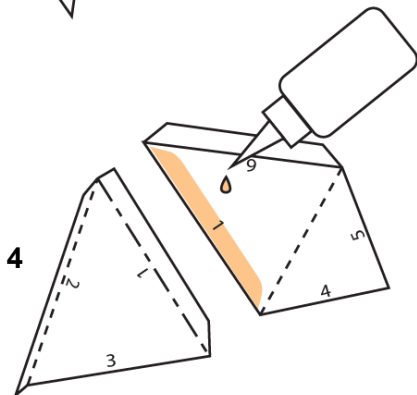


Gently score dotted and dash dotted lines for easy folding
(Use an embossing tool or a bone folder and a ruler)



----- Fold dashdotted lines to valley folds

..... Fold dotted lines to mountain folds



Glue matched number IDs

